

IDENTITY OF KOREA



Seoul National University,
College of Liberal Studies

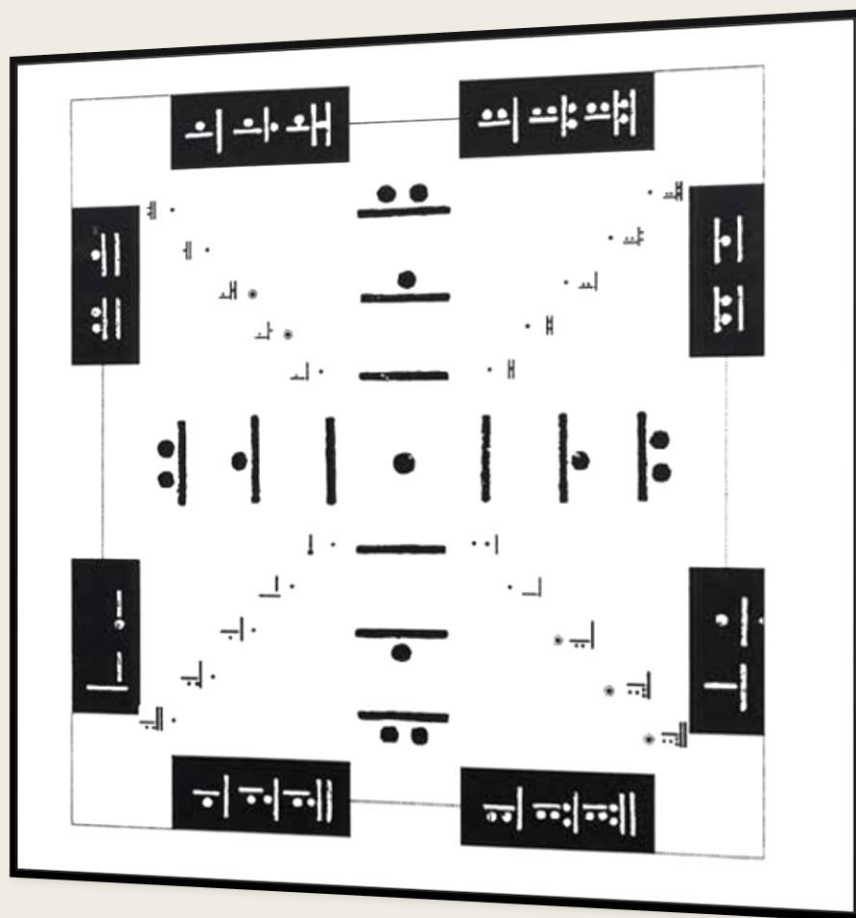
Day of Hangeul(한글날)



ㅏ ㅑ ㅓ ㅕ ㅗ ㅡ
ㅛ ㅜ ㅡ ㅣ ㅜ
ㅋ ㄴ ㅌ ㅍ ㅈ ㅇ
ㅊ ㅋ ㅌ ㅎ ㅍ ㅊ



Hangeul (한글)



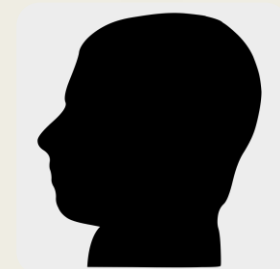
天



地



人



National Flag (태극기)



National Flag (태극기, 太極旗)





비빔밥 (Bibimbop)





반찬 (Banchan)





Sunshine Policy(햇볕정책)





Joint Entry(Pyeongchang Olympics)



Inter-Korean Summit (2018.04.27)

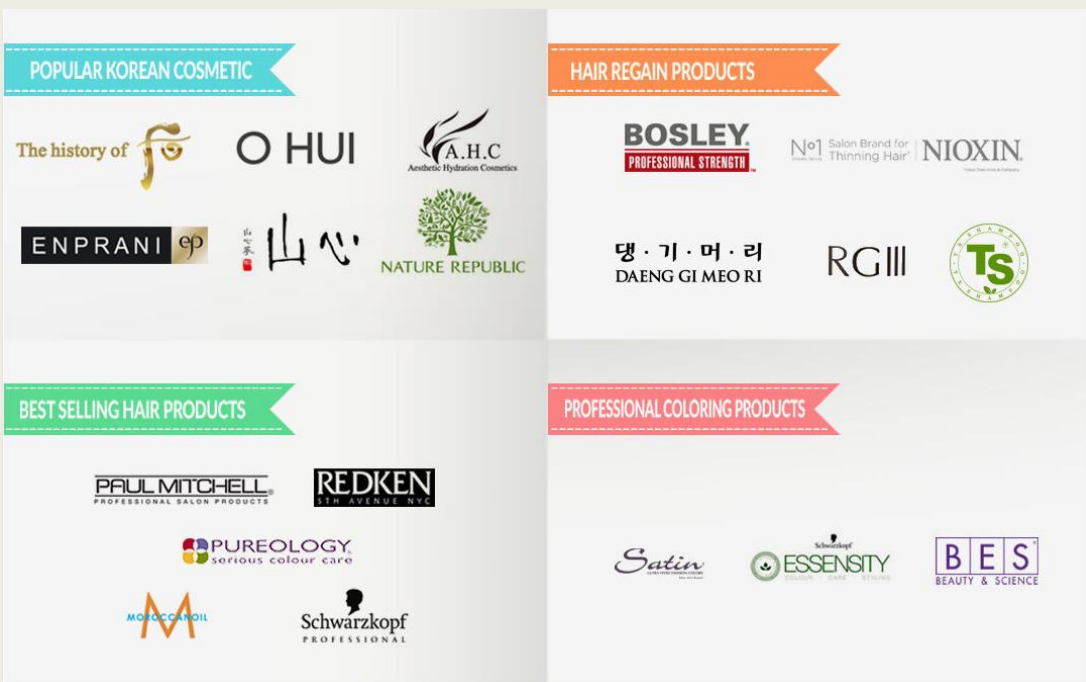
Fast Adapters



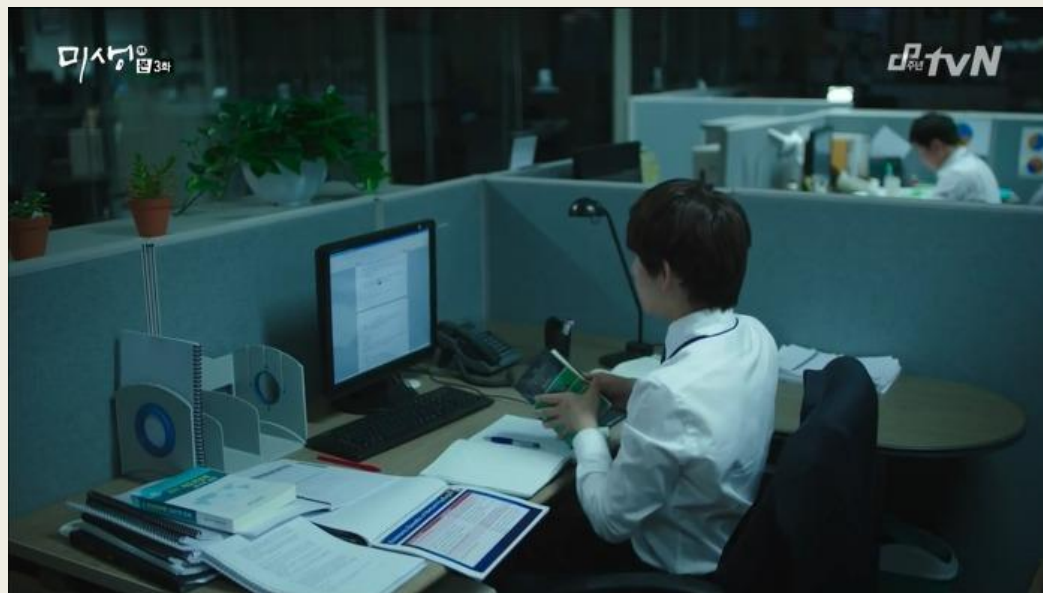
Fashion



Beauty

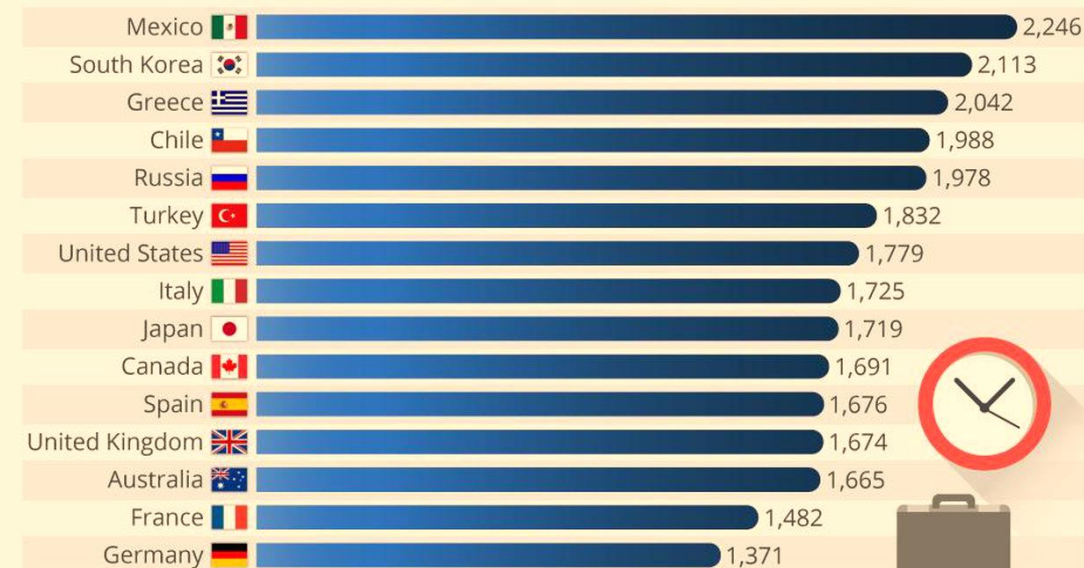


Long Working Hours



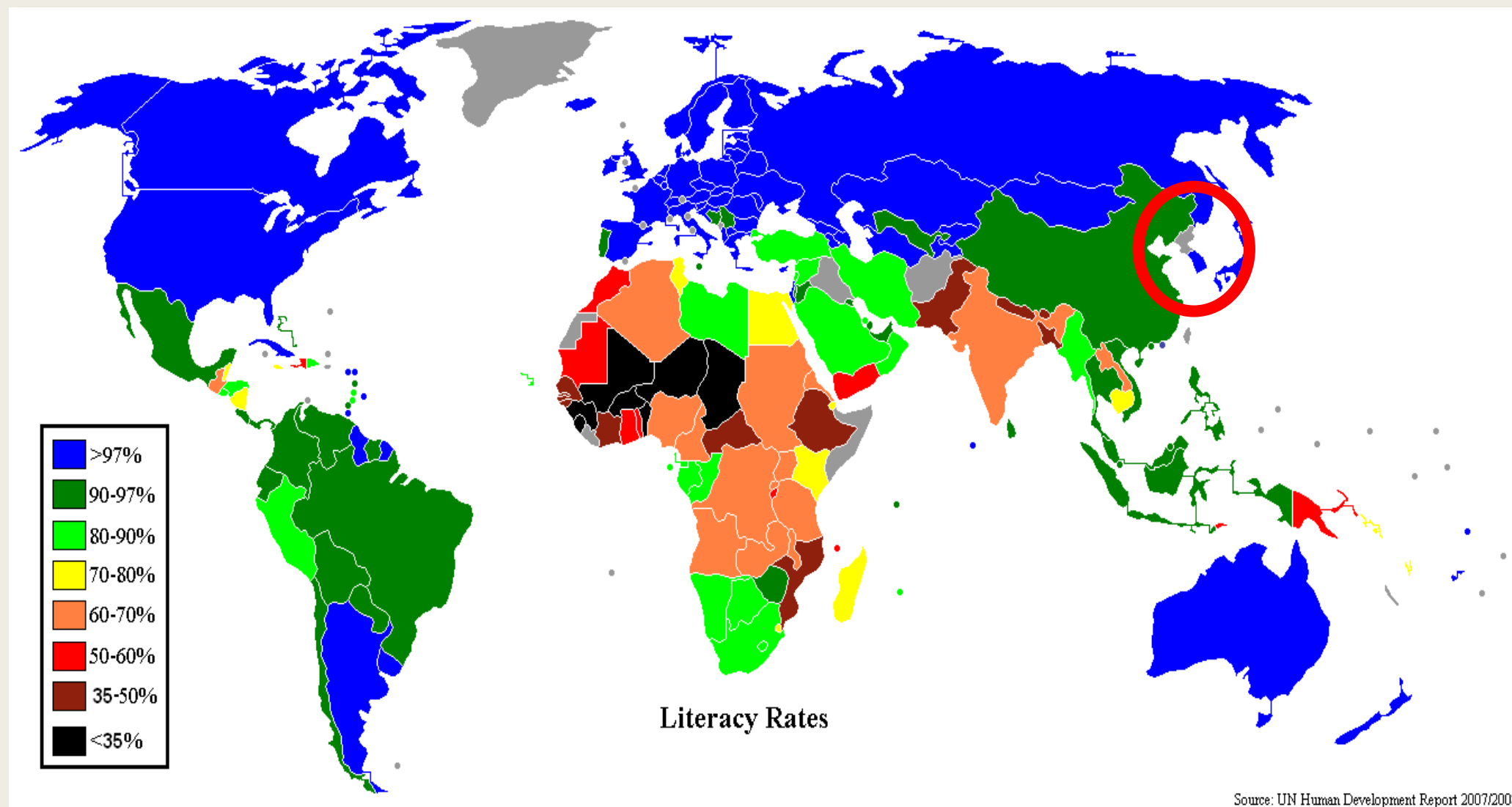
Who Works The Most Hours Every Year?

Average annual hours worked per worker in 2015 (selected countries)



@StatistaCharts Source: OECD

Forbes statista



Korean Taste of Arts



Dramas



Artists







Thank you for listening 😊
Let's enjoy our time